

KITCHEN

More Mediterranean influences are seen in the kitchen with the Italian island of Sicily informing the style. The backsplash has hints of Dolce and Gabbana and adds an upscale rustic note to this contemporary space. The blue in the backsplash tiles is similarly echoed in the kitchen island. A busy family kitchen, the smart decision to incorporate a sliding door gives the freedom to enjoy an extended perspective out to the garden when standing at the kitchen island or, close it off when formal entertaining is on the menu.

DINING ROOM

The kitchen leads through to the dining room with custom-built bookcase shelving repeated as a connecting device, but this time painted in an elegant shade of Tiffany blue.

Meet The Designer

Give your home
the professional touch



Mihir Sanganee

Designsmith, [@designsmith_studio](#)

‘We don’t do boring’ is the company motto and architect and creative director Mihir believes that great design is an art form that involves perfection and magnificence. His award-winning 50-strong team of architects, interior designers and project managers has delivered an impressive and bold portfolio of high-profile projects in the residential, F&B, retail, corporate and hospitality sectors.



Marco & Cinzia Tedeschi

Smart Renovation, [@smartrenovationdubai](#)

An award-winning design power duo with a shared passion for transforming spaces, Marco brings over 11 years of industry experience to Dubai’s diverse interior design scene. His creative vision and strategic capabilities are perfectly complemented by Cinzia’s Italian flair and knack for weaving together unique stylistic elements to craft dream homes that blend function, beauty, and sustainability.



Anu Kewalram

Anu Kewalram Interiors, [@akewalram](#)

The power of interiors to transform daily life is Anu’s design mantra and her project portfolio is rich with unique interiors that are crisp, stylish and timeless. A Dubai Top 50 Homes 2023 award winner, she believes that every space has a beautiful story to tell and should be a blended showcase of client individuality and her own elegant, warm and sophisticated design voice.



Shalini Srinivasan

Sol Haus Interiors, [@solhaus_interiors](#)

An innate ability to transform mundane spaces into captivating environments that evoke emotion and enthuse defines Shalini’s approach to interior design. She is passionate about ensuring that spaces feel cosy while delivering a strong aesthetic and her creative process involves meticulously crafting every detail to so that the final design reflects the unique personality and lifestyle of her clients.

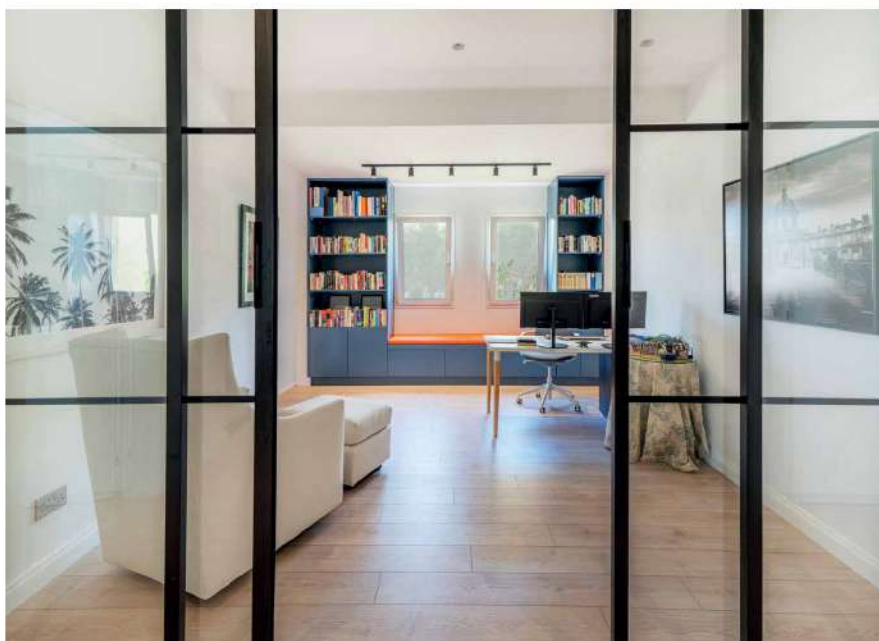


WALK-IN CLOSET

A practical his and hers space where functionality was the focus, the use of simple, clean lines keeps the aesthetic clutter-free with the beauty in the smallest details. Closet handles with an unusual colonial-inspired deliver a stylish counterpoint. The wrap-around closet on three walls also features glass-fronted doors as a design point of difference. A small desk vanity completes the room.

MASTER BATHROOM

A summer's day in St Tropez is translated into a playful yet sophisticated bathroom. A brace of vivid blue brick tiles in complementary shades were custom cut to decorate the bathtub back and vanity mirror area, with the neutral colour palette elsewhere allowing the colour to truly pop. The upmarket Mediterranean ambience is also reflected in the use of matte gold for the mixer taps and other hardware. Hidden storage is found under the vanity as well as in the toilet space.



WORKSPACE

An empty space on the first-floor landing was transformed into two hugely practical areas connected by a sliding door. The workspace, which is decorated in energy-giving shades of denim and orange, again features custom shelving. The window overlooking the calming garden features a cosy banquette seat for welcome moments away from the pressures of deadlines. The other half of the space has been designed for use as a gym or workout studio.

BAR CORNER

Functional and visually intriguing, a small corridor was opened up and softened with an archway to connect the living and dining rooms, adding depth and perspective. The idea to construct bar shelving around the arch gives the space purpose and interest – and makes the extra-large wine fridge appear less intrusive. The use of dark green is both a framing device and also a calming colour choice for a busy household, clearly defining the area as a place for leisure.



HALLWAY

First impressions count and the hallway was an anonymous space with no real identity. The perspective has been changed completely simply by introducing an oval ceiling feature with recessed lighting that casts a warm, welcoming glow. Slab stone flooring and light, bright walls really open up the space, complemented by a blue statement wall mid-staircase and collection of polished wooden consoles and tables accented by blue and white Asian influenced pottery.

PICTURE WINDOW

By opening up the floor-to-ceiling windows on two sides of the dining room, this allows the light to stream in and connects with the natural beauty outside. The room décor is kept deliberately simple to make the views the star. As the garden is not overlooked, this negated the need for curtains or sheers, which Marco and Cinzia felt would diminish the visual wow factor. A rustic dining table and chairs also played on the natural theme, accented by a retro hostess trolley and eclectic artwork.



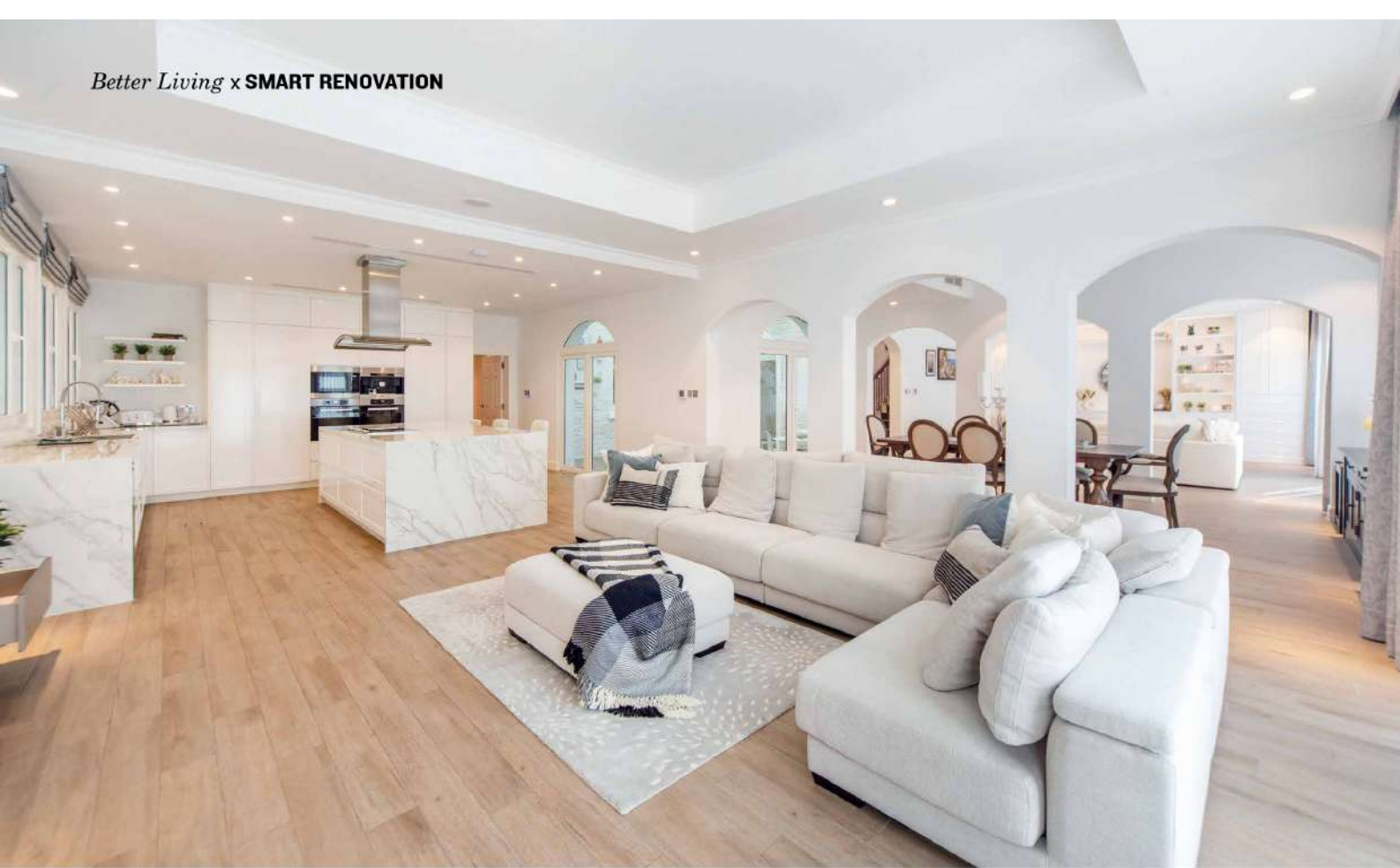
Home Is Where The Art Is

Cinzia and Marco Tedeschi take us on a cultural
design journey to The Meadows



LIVING ROOM

A relaxed and vibrant family space with a large picture window that celebrates the natural beauty outside, artworks collected from exotic travels are used to create a talking point with the central 'painting' a cleverly disguised TV screen.



Q&A

Expert Eye

Fallen in love with a current interiors trend? Marco and Cinzia from Smart Renovation explain why timeless design is the way to go

Why is choosing to adopt a current hot interior design trend not recommended?

The latest trends are often the ones seen on social media, in coffee shops, or restaurants, which, by definition, means they frequently change or are updated. Copy and pasting designs that you see on Pinterest or elsewhere can result in a house that is lacking your personalised touch, and a soul. If you see a design that you like and connect to, try to adapt it to reflect your unique personality and lifestyle.

Aren't all trends simply reiterations of past styles?

It's not as simple as that. Trends are cyclical in nature with elements from past styles being reinterpreted and adapted for modern tastes and reflecting new technologies but, overall, interior design trends are a mix of old and new. While they draw inspiration from the

past, they are not simply reiterations. They evolve and adapt to fit the needs and preferences of modern living.

What is your definition of timeless design?

Speaking from a client's point of view, a timeless design is one you never get tired of. It should reflect your soul and be something you work on together with your designer rather than copy from somewhere. Customise as many elements as you can because, at the end of the day, the redesigned house should feel like a home.

How can you adapt a trend to make it timeless?

First you need to form a timeless and classic skeleton for your house with the layout, furniture and flooring based on functionality and personality. Then see what draws you to a particular trend and incorporate the elements

you truly connect with in the design; adding trendy touches with accessories such as pillows, wallpaper, rugs, lights, etc. Make sure to incorporate pieces that have personal meaning such as artwork, furniture or family heirlooms.

If you have a space that is outdated, how can you refresh it without a complete renovation?

Small changes can make a big difference. If you feel like your house doesn't need a complete makeover but still want to update the style, you can always give it a fresh coat of paint, update hardware like knobs and lights, customise a bespoke cabinet, refresh rugs and pillows, rearrange furniture, reupholster old pieces, declutter and organise the rooms. New plants always add a fresh touch.

For more information, go to smartrenovation.ae



“

To merge the beautiful garden with the inside interiors was really important, and the large picture window was a focal point

”

HOME NOTES

WHO LIVES HERE?

A busy professional couple, who love to travel, and their two boys

THE PROPERTY

A five-bedroom villa in The Meadows

Home to a family of four with roots in India and the UK, an eclectic collection of global art was the inspiration for a design aesthetic that marries modern British with France's Côte d'Azur, and a touch of cosmopolitan Dubai.

"We connected with the client by chance. They were at a dinner party in a house we had renovated and fell in love with the basin in the powder room," explains Cinzia. The Smart Renovation (@smartrenovationdubai) modus operandi has cultural design as the anchor for every project with the Tedeschis passionate about creating interconnected spaces that reflect the client's personality and pieces.

The first step for the duo was to open up the interiors as much as possible, with the 4,000-square-foot villa lacking a harmonious flow. Says Marco: "The original footprint was based on successive rooms that didn't have emotional connectivity, and we decided to enlarge the openings between the various living spaces to foster a sense of natural progression and connection." This was further enhanced by creating picture windows to let in abundant natural light and foster a more synergistic connection between the garden and interiors.

Existing furniture pieces were refreshed and repositioned to complement different spaces. In the dramatic powder room, for example, an Oriental cabinet belonging to the family was repainted and repurposed as a vanity. "We added the distinctive ceramic basin, juxtaposed against the white countertop, as a focal point within the space," notes Cinzia. The overall effect evokes images of Rajasthan's colourful palaces.

A bold colour palette infuses warmth throughout this happy home and ties the living spaces together while giving a nod to some of the hues and shades linked to memories of family travels.



The distinctive ceramic basin, juxtaposed against the countertop, is a focal point within the space





SMART RENOVATION

ITALIAN CREATIVITY AND COORDINATION

Beyond Simple Fit-Out



Smart Renovation Dubai

Creating Homes That Tell Your Story



smartrenovation.ae

 +971 56 799 0448

 info@smartrenovation.ae